

## Accessibility Guide for Grenville at Wallops Wood

Telephone: 01489 878888

Email: [unwind@wallopswoodcottages.co.uk](mailto:unwind@wallopswoodcottages.co.uk)

Website: <https://www.wallopswoodcottages.co.uk>

Contact for accessibility enquiries: [unwind@wallopswoodcottages.co.uk](mailto:unwind@wallopswoodcottages.co.uk)



### Welcome

Welcome to the beautiful Meon Valley and to our accessible, child- and pet-friendly self-catering holiday houses.

Within easy reach of Winchester, Petersfield, Southampton and Portsmouth, our well-equipped holiday houses have woodburners, enclosed gardens, hot tubs, underfloor heating and en-suite facilities.

1.5 miles away, at the main site, is an indoor heated swimming pool which can be accessed by seven steps or the hoist (with choice of sling- or moulded seat). The jacuzzi can be accessed by 2 steps or the hoist.

All holiday houses are accessible, with both Scots Pine & Sicilian Lemon being M3A rated and Portuguese Laurel being M2-rated under the National Accessible Scheme.

Complimentary accessible equipment is available for guests to borrow during their stay, bookable on a first-come, first-served basis.

More specialist equipment such as profiling beds or hoists can be ordered from Solent Mobility on 023 9200 9999.

## Accessible Ramp Access

- Each holiday house has an accessible ramp (1750mm wide, but narrows due to drainpipe – please see floorplans for more details)

## Bedrooms

- Scots Pine, Sicilian Lemon & Portuguese Laurel have wheelchair-accessible bedrooms
- Non-allergic bedding is available on request
- A portable hoist and a profiling bed are available for hire from Solent Mobility

## Level Access Bedrooms & Bathrooms

- All routes to bedrooms have access of 780mm wide or more
- All bedroom doors are 780mm wide or more
- Scots Pine & Sicilian Lemon have bedrooms with unobstructed floor space of 1120mm by 520mm, or more. Scots Pine & Sicilian Lemon have two wetrooms each with level access showers
- Portuguese Laurel bedrooms have unobstructed floor space of 1740mm by 500mm and has 3 wetrooms with level access showers and a free-standing bath enabling the use of a hoist

## Hearing

- All TVs have subtitles available
- Most staff have had disability awareness training

## Visual

- The walls and the doors have high colour contrast
- We have information in large print
- Taps have red and blue indicators and raised buttons to indicate which are hot and cold

## National Accessible Scheme

The accommodation is rated by the National Accessible Scheme as suitable for:



- Older and less mobile guests
- Part-time wheelchair users
- Independent wheelchair users
- Guests with hearing loss
- Visually impaired guests
- Staff are available 24 hours a day
- Most staff are disability awareness trained
- We have emergency evacuation procedures for disabled visitors

## Our Address

Upper Grenville Copse, Grenville Lane, Droxford, Hampshire, SO32 3QX

## Travel by Public Transport

- You can get to Grenville at Wallops Wood by train
- The nearest train station is Petersfield. The train station is 12 miles / 19.3 km away
- Petersfield Railway Station is on the London Waterloo to Portsmouth Harbour line
- Winchester Railway Station is 15 miles from Grenville at Wallops Wood where there are connections to London Waterloo, Portsmouth Harbour, Basingstoke, Oxford, Manchester Piccadilly via Coventry & Stoke-on-Trent, Newcastle via Doncaster, Weymouth, Bournemouth, Poole, Reading and Southampton Central
- From Petersfield you can get a taxi with Wheel Drive: 01730 892052. This taxi company has wheelchair accessible vehicles
- From Winchester you can get a taxi with Wessex Cars: 01962 877749. This taxi company has a wheelchair accessible vehicle
- Taxis are available from Grab-a-Cab in Fareham: 01329 825045

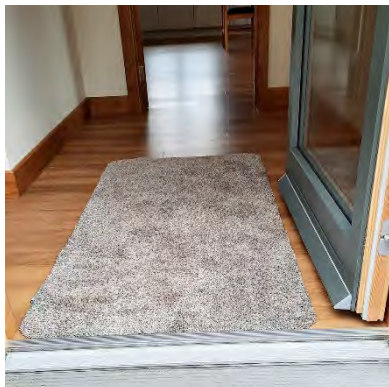
## Parking

- Free car parking less than 50 metres from each house entrance
- Car parking is gravelled with block paving spaces for cars to park outside each house
- Accessible ramp access from the car parking spaces to the entrance of each holiday house. The ramps are 1750mm wide, (narrowing to 1600mm for drainpipe at Scots Pine and Sicilian Lemon; and narrowing to 1540mm for drainpipe at Portuguese Laurel)
- An additional car parking space, in front of each house, is gravelled

## Arrival

### Entrances

- Entrances to Scots Pine and Sicilian Lemon have level access
- Portuguese Laurel has a 7mm lip/step
- Doors are side-hung and manual
- Front doors are 800mm wide
- When you arrive, we can help carry your luggage, by prior arrangement



Threshold, Scots Pine



Threshold, Sicilian Lemon



Threshold, Portuguese Laurel

## Features for the Visually Impaired

- High colour contrast between walls and doorframes
- Braille can be arranged on all appliances and cupboards
- Taps have red and blue indicators and raised buttons to indicate which are hot and cold
- The information folder is printed in a larger font size
- Touch lamps are in all bedrooms



High contrast walls and doorframes



Taps with raised indicators



Information folder in 14pt font



Touch lamps are in all bedrooms



## Scots Pine: M3A-rated Holiday House



### Living room

- The route from the main entrance to the lounge is level access, the doorway from the entrance lobby is 780mm wide
- There is an electrically-operating riser/recliner chair in Scots Pine



The spacious open plan kitchen/dining/living area with a woodburner and riser recliner

### **Wheelchair-Accessible Kitchen**

- Scots Pine has an open plan kitchen with level access
- The route is 1500mm wide, or more
- Work surfaces are 910mm high, with a lowered section at 710mm high. The lowered work surface has a clear underspace
- Upon request, a convection oven/microwave and 2 ring electric hob can be placed on the lowered section of the work surface
- The table and plates have high colour contrast
- Flooring is oak in Scots Pine
- There are carver chairs at the dining room table



Scots Pine accessible kitchen is very spacious with carver chairs and a lowered kitchen work surface

### **Wheelchair-Accessible Bedrooms**

- There are two fully accessible en-suite bedrooms in Scots Pine
- The route to the bedrooms is 880mm wide. The bedroom doors are 780mm wide. There is 1570mm at the side of the bed. The beds are 610mm high.
- The wardrobe clothes rail is adjustable and can be changed to the lower setting at 880mm high
- Beds can be made up as either a superking or twin
- Space at the side of the bed is 470mm at its narrowest. From other sides it is 1570mm or wider
- There is a 1130Wx580Dx710H mm dressing table with space for a front-facing wheelchair beneath
- All bedrooms have ceiling lights, bedside touch lamps and natural daylight
- Lights are LED or have energy-saving bulbs
- Subtitles are available on all televisions
- Non-allergic bedding available on request
- All bedrooms are non-smoking
- All floors throughout the house have oak flooring
- We use non-allergic cleaning products - details can be provided on request
- Bedroom furniture can be moved, where possible, to improve accessibility
- Furniture raisers and bed guards are available on request





Accessible bedroom in Scots Pine



Scots Pine accessible wardrobe

### En-suite Wetrooms

- Scots Pine has two en-suite wetrooms with a level access shower. The bathroom door is 780mm wide. A showering wheelchair or perching stool is available. The direction of transfer to the toilet is to the front or side transfer via the shower area. There is 1080mm in front of the toilet. The toilet seat is 500mm high and a toilet raiser is available
- The basin is 750mm high, but is adjustable and can be raised and lowered as required from 700mm to 870mm high. The taps are lever operated. There is space under the basin, with no pedestal
- The bathroom has an emergency call system
- Adjustable grab rails, toilet raisers, a showering wheelchair, a step stool, a perching chair and a commode are available – see the equipment list on our website
- Swing bins are in the bathrooms



Scots Pine accessible wetroom



Height adjustable basin in the accessible en-suite





## Sicilian Lemon: M3A-rated Holiday House



### Living room

- The route from the main entrance to the lounge is level access, the doorway from the entrance lobby is 780mm wide



Sicilian Lemon downstairs open plan living area. Within the seating area is a riser recliner

### Wheelchair-Accessible Kitchen

- Sicilian Pine has an open plan kitchen with level access
- The route is 1560mm wide, or more
- Work surfaces are 910mm high, with a lowered section at 710mm high. The lowered work surface has a clear underspace
- Upon request, a convection oven/microwave and 2 ring electric hob can be placed on the lowered section of the work surface
- The table and plates have high colour contrast
- Oak flooring throughout
- There are carver chairs at the dining room table (not shown here)



Sicilian Lemon accessible kitchen is very spacious with carver chairs and lowered work surface

### Wheelchair-Accessible Bedrooms

- There are two fully accessible en-suite bedrooms in Sicilian Lemon
- The route to the bedrooms is 880mm wide, or more. The bedroom doors are 780mm wide. There is 1450mm or more at the side of the beds. The beds are 520mm high.
- Adjustable wardrobe clothes rail (lowest setting at 830mm high)
- Beds can be made up as either a superking or twin
- The space at the side of the beds is 520mm at its narrowest point. From other sides it is 1150mm or wider
- There is a 1130Wx580Dx710H mm dressing table with space for a front-facing wheelchair beneath
- All bedrooms have ceiling lights, bedside touch lamps and natural daylight
- Lights are LED or have energy-saving bulbs
- Subtitles are available on all televisions
- Non-allergic bedding is available on request
- All bedrooms are non-smoking
- Sicilian Lemon has oak flooring
- We use non-allergic cleaning products - details can be provided on request
- Bedroom furniture can be moved, where possible, to improve accessibility
- Furniture raisers and bed guards available on request



Sicilian Lemon accessible bedrooms are en-suite, very spacious and include accessible wardrobes

### En-suite Wetrooms

- Both downstairs bedrooms have an en-suite wetroom with level access shower. The bathroom door is 780mm wide. A showering wheelchair or perching stool is available. The direction of transfer to the toilet is to the front or side transfer via the shower area. There is 1140mm in front of the toilet. The toilet seat is 480mm high. A toilet raiser is available. The basin is 750mm high, but is adjustable and can be raised and lowered as required from 700mm to 870mm high. The taps are lever operated. There is space beneath the basin, with no pedestal
- The bathrooms have an emergency call system
- Adjustable grab rails, toilet raisers, a showering wheelchair, a step stool, a perching chair and a commode are available – see the equipment list on our website
- There is a swing bin in each bathroom



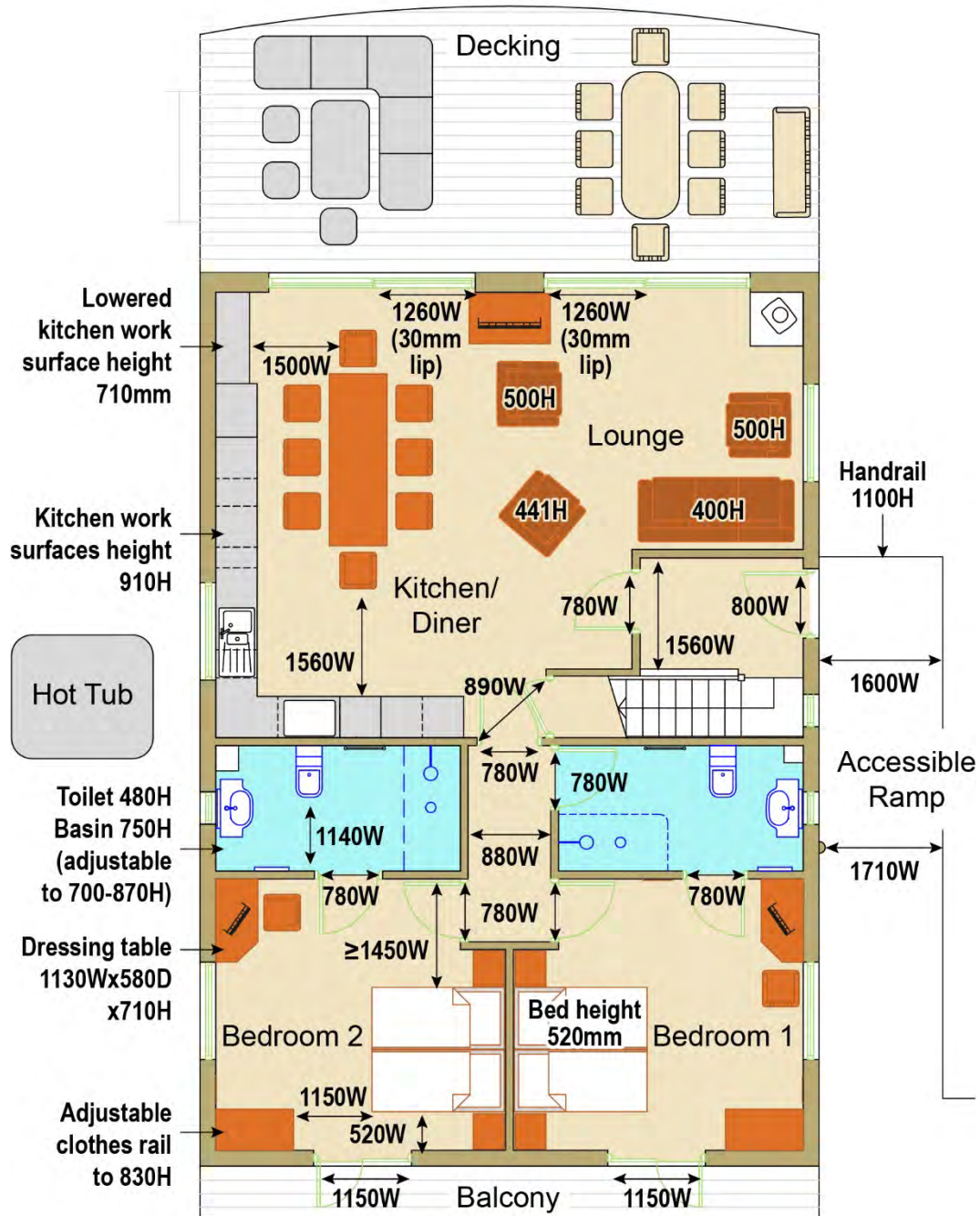
Accessible wetroom, Sicilian Lemon



Height adjustable basin in the accessible en-suite



Floorplan: Ground Floor



**Sicilian Lemon**  
**Grenville at Wallops Wood**

The downstairs floorplan, Sicilian Lemon

## Portuguese Laurel: M2-rated holiday house



### Living room

- The route from the main entrance to the lounge is level access and 660mm wide or more



Portuguese Laurel open plan living area with two sets of patio doors to the deck



### Wheelchair-Accessible Kitchen

- Portuguese Laurel has an open plan kitchen/dining/seating area with level access
- The route is 1950mm wide, or more
- Work surfaces are 910mm high, with a lowered section at 710mm high. The lowered work surface has a clear underspace
- Upon request, a convection oven/microwave and 2 ring electric hob can be placed on the lowered section of the work surface
- The section beneath the sink can be removed upon request
- The table and plates have high colour contrast.
- Luxury vinyl flooring throughout
- There is a carver chair in the bedroom



Portuguese Laurel accessible kitchen area is very spacious and has a lowered kitchen work surface

### Wheelchair-Accessible Bedroom & En-suite Wetroom (Bedroom 2)

- There is one fully accessible en-suite bedroom in Portuguese Laurel
- The route to the bedroom is 780mm wide, or more. The bedroom door is 780mm wide. There is 1740mm at the side of the bed. The bed is 620mm high
- Adjustable wardrobe clothes rail (lowest setting at 830mm high)
- The bed can be made up as either a superking or a twin
- The space at the side of the bed is 500mm at its narrowest point. From other sides it is 1510mm or wider
- There is a 1210Wx580Dx730H mm dressing table with space for a front-facing wheelchair beneath
- The bedroom has ceiling lights, bedside touch lamps and natural daylight
- Lights are LED or have energy-saving bulbs
- The bedroom has an en-suite wetroom with a level access shower. The bathroom door is 780mm wide. A showering wheelchair or perching stool is available. The direction of transfer to the toilet is to the front or side transfer via the shower area. There is 1140mm in front of the toilet. The toilet seat is 480mm high. A toilet raiser is available. The basin is 750mm high, but is adjustable and can be raised and lowered as required from 700mm to 870mm high. The taps are lever operated.
- Subtitles are available on all televisions
- Non-allergic bedding is available on request
- All bedrooms are non-smoking



- Oak flooring throughout
- We use non-allergic cleaning products - details can be provided on request
- Bedroom furniture can be moved, where possible, to improve accessibility
- Furniture raisers are available on request



Portuguese Laurel accessible bedroom with patio doors to the balcony and huge accessible wetroom



## Accessibility Equipment



- The following complimentary equipment can be borrowed on a first-come, first-served basis: attendant-propelled wheelchairs, a suspended bath seat, furniture raisers, extendable suction grab bars, an adjustable height walking aid, a lightweight wheeled rollator with rest seat, bed guards, vibrating alarm clock, a raised toilet seat with frame, commodes, a raise toilet seat, a perching stool, elbow crutches and a hand bell
- A list of all available equipment can be found at <https://www.grenvilleatwallopswood.co.uk/accessibility>
- Birdie hoists, profiling beds or mobility scooters can be hired from Solent Mobility, who will install items prior to arrival. Telephone: 023 9200 9999
- Battery powered wheelchairs and mobility scooters can be recharged using any of the power points in the houses

## Emergency Evacuation Procedures

- We have emergency evacuation procedures for disabled visitors

## Laundry Facilities

- There is a washer/dryer in all kitchens, all with level access
- An iron and ironing board in each house which can be used from a seated position
- The iron and ironing board can be found in the cupboard located in the living/dining area in all holiday houses



## Getting Around Outside

### Gardens

- The gardens are accessible via a pathway and some gravel into the individual gardens
- Within each enclosed garden is a hot tub and entry to it is via 2 steps. Unfortunately it is not possible to use a hoist to enter the hot tubs



Scots Pine enclosed garden with hot tub. An accessible ramp provides access from the car park

### Decking

- Each deck area includes rattan garden furniture (a rattan table and sofas). Seat height is 350mm
- And there is teak outdoor dining furniture

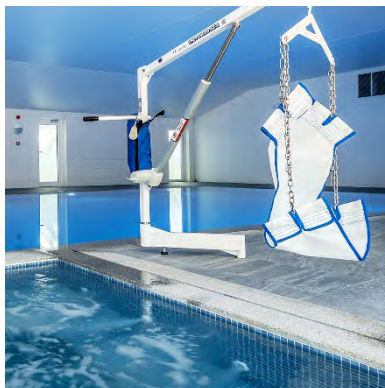
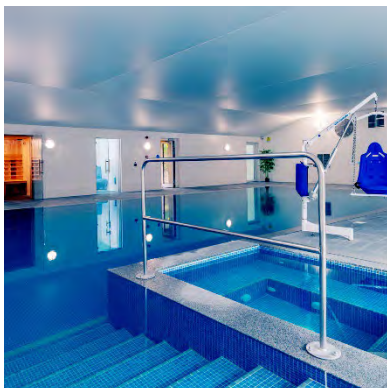


It's easy to relax on the decking on a sunny afternoon

## Swimming Pool, Sauna and Steam Room



- 1.5 miles away, at the main site, is an indoor heated swimming pool
- Access is via nine steps with a handrail, or the hoist
- The pool hoist has a choice of sling- or moulded seat
- The jacuzzi can be accessed by 2 steps with a handrail, or the hoist
- 45 minute daily swim sessions can be booked on the timetables in the swimming pool lobby
- Included within the daily swim sessions are access to the sauna and steam room
- The swimming pool is 13 x 6 metres and is 1.45 metres deep
- It is heated to 30°C
- There is an accessible wetroom in the swimming pool complex for disabled guests



Swimming pool and jacuzzi with moulded seat and sling seat hoist. Accessible changing room



## The Meadow



- At our main site, 1.5 miles away, is a huge meadow for our guests, and their pets, to enjoy. It's great for picnics, and children and dogs love playing there!

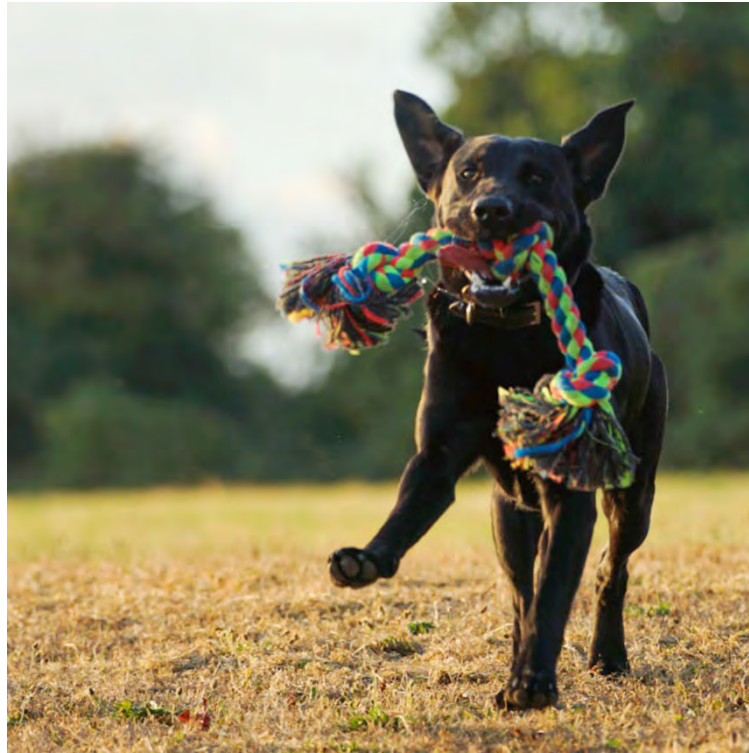
## The Games Room



- Also at our main site, our Games Room is very popular with children (even the grown-up ones)!
- A door from the games room leads to an accessible toilet



## Dogs Welcome



- Grenville at Wallops Wood is dog-friendly
- Dogs receive their own welcome basket including new toy and collar tag engraved with our details
- All dogs, including assistance dogs, can use the enclosed gardens for toileting
- A dog shower can be found in the car park of the main site

## Customer Care Support

- Staff are available 24 hours a day and most staff are disability awareness trained
- Help is available by dialling the contact number provided in each holiday house
- Information is printed in a large font size
- Smoke and carbon monoxide alarms are fitted in each holiday house



Wallops Wood staff with their Welcome All training certificates